



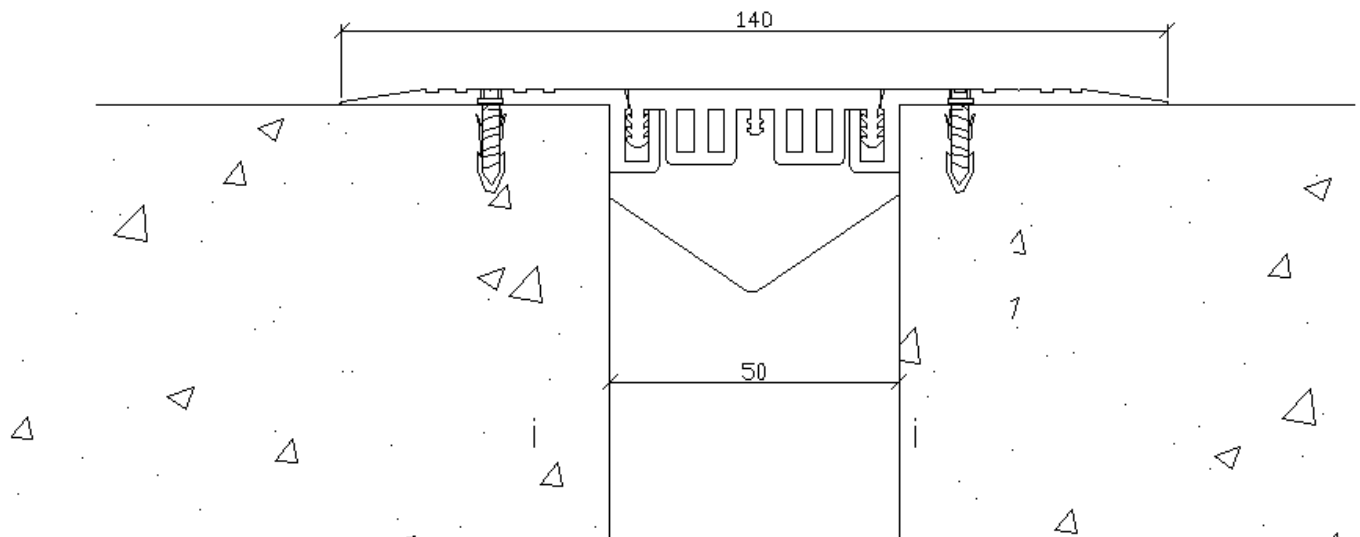
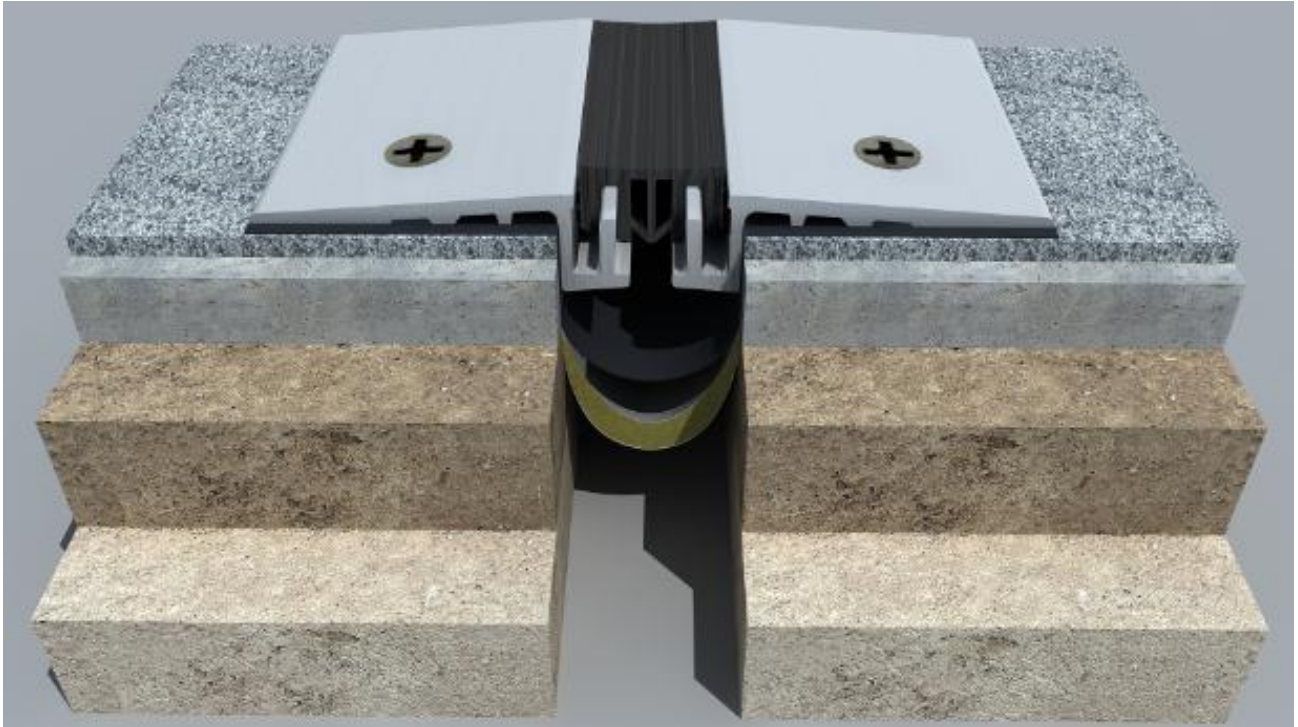
# MEISHUO Building Materials CO.,Ltd

Office: No.2208, Huaqiao Square, Pukou district, Nanjing,China

Tel: 0086-025-58196288 Fax:0086-025-58196399

Website: [www.msbox.com](http://www.msbox.com) E-mail:sariel@msbox.com

## MSQTO-1 EXPANSION JOINT SPEC DATA





# MEISHUO Building Materials CO.,Ltd

Office: No.2208, Huaqiao Square, Pukou district, Nanjing,China

Tel: 0086-025-58196288 Fax:0086-025-58196399

Website: [www.msbox.com](http://www.msbox.com) E-mail:sariel@msbox.com

## Product Description:

- Designed for small joint width
- Featuring a recessed design that minimizes sight lines
- Flexible seal provides a secure fit and yet retains flexibility
- Gaskets available in many coordinating designer colors
- Snap-fit design for easy on-site assembly
- Durable architectural aluminum frames and covers
- Ideal for carpet, vinyl, ceramic tile and other floor finishes

## BASIC USES:

Application: floor to floor

Joint Width(W)	25	50
Exposed surface(ES)	115	140
Movement Capacity	10	20

## TECHNICAL DATA:

### MATERIALS:

**Aluminum:** ASTM 6063T5 Mill finish, anodisation

## WARRANTY:

Meishuo warrants that its products are manufactured free of defects and conform to the technical data listed. Under this warranty, we will replace any material proven defective when applied in accordance with our written instructions for applications recommended by us as suitable for subject products. Meishuo shall not be liable for any injury, loss or damage, direct or consequential, arising out of the use of the product.